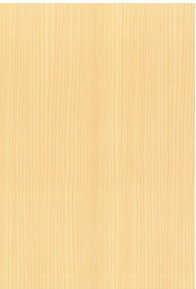


Finish Options

Veneers



European Maple



American Maple



Anigre



Caramelized Bamboo



Birch



Pearwood



Steamed Beech



Natural Beech



Douglas Fir



European Oak



American White Oak



Ash



Alder



Spruce



Hemlock



American Cherry Plain Sliced



American Cherry Quarter Cut



Larch



Makore



Walnut Quarter Cut



Walnut Plain Sliced



Pine



Sapele



Teak



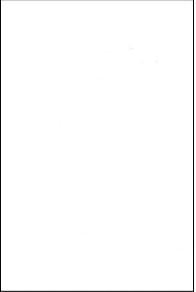
Wenge



Zebrawood

Many more veneer options are available. These are picture representations of typical veneer options. Veneers will be ordered for each project separately and cut per project specifications. Color and grain will differ from any photo shown here.

Melamines



White—151G



Oak—2037G



Maple—2106G



Beech—4431G



Silver—F3009

Many more melamine options are available at www.innovus.co. The options posted to the left are the standard options available with Topakustik.

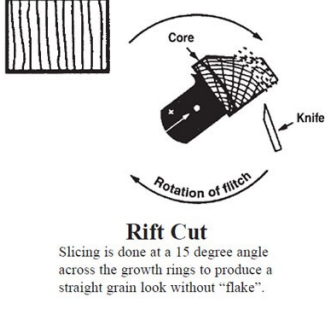
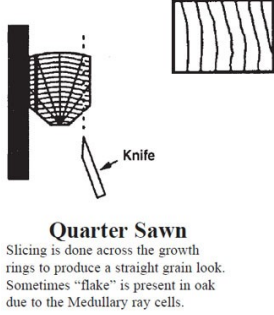
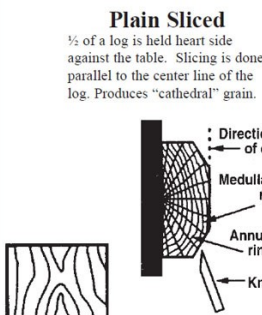
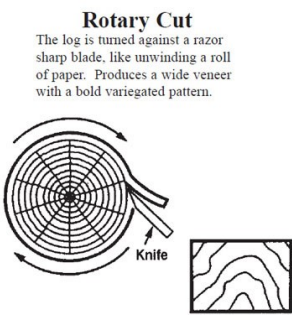
Paints



White—RAL9010

Topakustik standard white paint is RAL 9010. RAL color series are considered standard options, however, any paint color can be matched. Please specify paint color and number and a color chip can be sent and matched on your product sample.

Veneer Cuts



Veneer Matching

• Book Match - In book matching every other leaf of veneer is turned over just as the leaves of a book, producing a matching joint design or mirror image.



• Slip Match – veneer leaves are joined side by side, resulting in a repeat pattern of the grain pattern.



• Random Match - veneers are joined with the intention of creating a casual unmatched effect.



• Reverse Slip Match - similar to a slip match except that each alternate veneer leaf is reversed to the opposite end.

